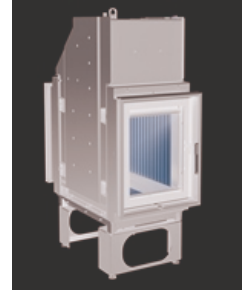




Appliances properties: LEDA Werk GmbH & Co. KG - TURMA H80 XL W DS

Master data

| | |
|---|--|
| Date of entry | Jun 11, 2018 |
| Manufacturer | LEDA Werk GmbH & Co. KG |
| Model | TURMA H80 XL W DS |
| Nominal heat output [kW] | 13 |
| Declared nominal space heating output [kW] | 7.5 |
| Nominal water heating output [kW] | 5.5 |
| Water operating pressure [bar] | 2.5 |
| Continuous burning appliance | — |
| Type test standard | DIN EN 13229 |
| Year of testing | 2017 |
| Test laboratory | RRF Rhein-Ruhr-Feuerstättenprüfstelle GmbH |
| Number of test laboratory | 2 |
| Number of test report | RRF - 29 16 4382 |



Flue gas values

| | Wood |
|------------------------------------|------|
| Flue gas mass flow [g/s] | 13.6 |
| Flue gas mass flow [g/s] | 248 |
| Necessary flue draught [Pa] | 12 |

Further important characteristics of the appliance

Suitability for installation to a shared flue¹⁾



Connectivity to the central heating system



General technical approval for room sealed operation



¹⁾ For unsealed operation it is possible to install the appliances to a shared flue system (please see installation manual).

On behalf of the manufacturer, the HKI Industrieverband e.V. hereby confirms compliance with the respective requirements* in accordance with 1.BImSchV. The type test report of the fireplace has been submitted to the HKI Industrieverband e.V.

* A green check mark with a „1“ indicates that the requirements of the 1st BImSchV are fulfilled, a green check mark with a „2“ indicates that the 2nd level of the 1st BImSchV is fulfilled. A yellow check mark shows that the transitional regulation of the 1st BImSchV is fulfilled and a red line means that the 1st BImSchV is not fulfilled.

Evaluation of emission data and efficiency Wood

| Norm : Inset appliances (with closed firedoor) | Evaluation |
|--|--|
| D - 1.BImSchV |  Stufe 2 |
| A - Austrian regulation referred to Art 15a B-VG |  2015 |
| CH - Swiss clean air act |  |
| DK - Danish regulation for air pollution from wood burners |  |
| F - Crédit d'impôt à la transition énergétique |  7★ |

Evaluation of emission data and efficiency Lignite briquettes

| Norm : Inset appliances (with closed firedoor) | Evaluation |
|--|------------|
| D - 1.BImSchV | ! |

Emission evaluation legend

-  Stufe 2 Compliant with the requirements of the 2nd stage of the 1.BImSchV (only for Germany)
-  Stufe 1 Compliant with the requirements of the 1st stage of the 1.BImSchV (only for Germany)
-  2015 Compliant with the requirements of the Austrian Agreement pursuant to Art. 15a B-VG from 2015 (applies only to Austria)
-  7★ Compliant with the requirements for the „Crédit d'impôt“ promotion in France, the fireplace complies with the classification 7* of the Flamme Verte Label
-  6★ Compliant with the requirements for the „Crédit d'impôt“ promotion in France, the fireplace complies with the classification 6* of the Flamme Verte Label
-  5★ Compliant with the requirements for the „Crédit d'impôt“ promotion in France, the fireplace complies with the classification 5* of the Flamme Verte Label
-  ★ Compliant with the requirements of the 1 star stage in Italy.
-  ★★ Compliant with the requirements of the 2 star stage in Italy.
-  ★★★ Compliant with the requirements of the 3 star stage in Italy.
-  ★★★★ Compliant with the requirements of the 4 star stage in Italy.
-  ★★★★★ Compliant with the requirements of the 5 star stage in Italy.
-  Fulfils the requirements
-  Complies with requirements of the transition ruling (1.BImSchV)
-  Requirements are not fulfilled
-  No information/unknown
-  No measuring values are available for this fuel, operation with this fuel is not permitted

No symbol means that there are no requirements.

Here you will find further information